



Weekly Construction Progress Report

Morningside Elementary School

Week Ending: 08/06/2021

THIS WEEK

- Sitework continues
 - Storm drainage piping installation
 - Building pad grading
- Interior wall framing continues in area A
- Mechanical demolition continues throughout building
- Electrical demolition continues throughout building
- Mechanical equipment relocation begins
- Electrical rough-in continues in area A and B
 - Pulling MC cable for lighting circuitry and outlets
- Plumbing rough-in continues throughout building
- Underground rough-in pour back
- Elevator pit pour back
- New kitchen layout begins

NEXT WEEK: 08/09/21 - 08/13/21

- Sitework continues
 - Storm drainage piping installation
 - Building pad grading
 - Underground storm pond installation
- Interior wall framing begins in area B
- Mechanical demolition continues throughout building
- Electrical demolition continues throughout building
- Mechanical equipment relocation continues
- Electrical rough-in continues in area A and B
 - Pulling MC cable for lighting circuitry and outlets
- Plumbing rough-in continues throughout building
- New kitchen layout continues

BUDGET

Construction Budget

\$17,600,000.00

Budget Status

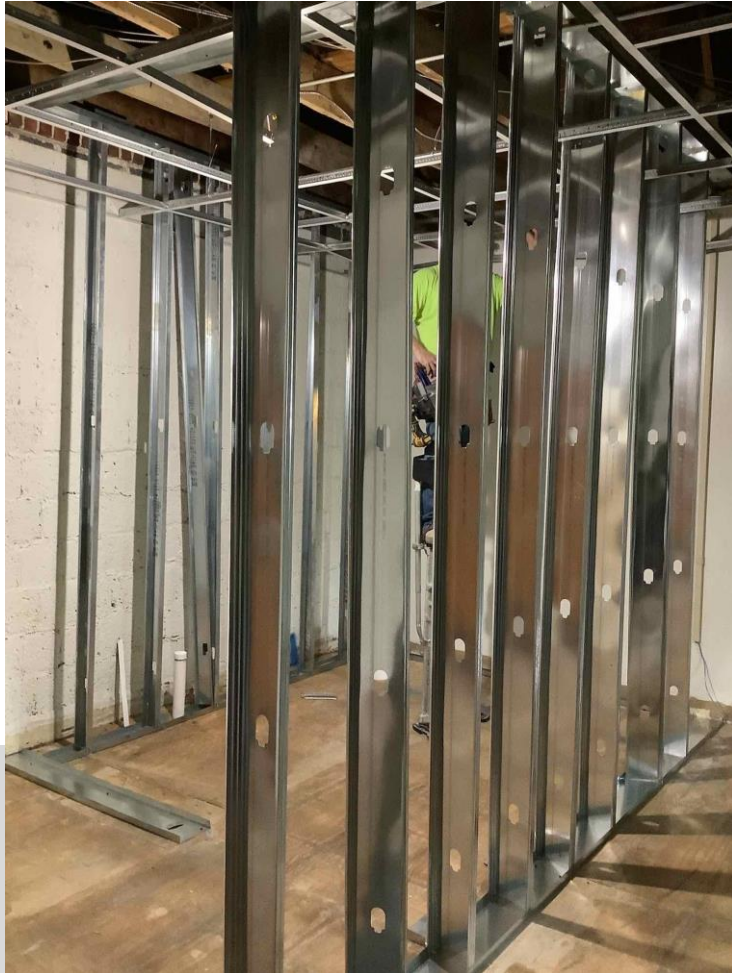
\$1,290,650.35

Completed By:
Ben Fairchild

PARRISH
CONSTRUCTION GROUP

Photo/Activity Updates

Interior wall framing in area A



MEP overhead rough-in



Photo/Activity Updates

Plumbing rough-in pourback



Elevator pit installation



Photo/Activity Updates

Construction entrance installation



Building pad grading

